



- Data Navigator -

Approach to Safe Use of Data



Where we are

In our approach to the data work for the OHI Data Navigator, we are mindful of the potential of data to harm and retraumatise colonised communities.

The following document sets out our current approach to safe use of data, drawing from principles of Māori data sovereignty.

As this is a new and developing field, we present these principles as a living framework, which will be refined and improved as we continue to engage with experts.

Principles of Safe Use

Rangatiratanga



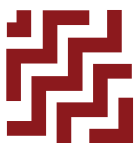
We recognise the mana motuhake of iwi and Māori communities. We take our roles as Tāngata Whenua and Tāngata Tiriti seriously.

How this has influenced our approach

We have engaged genuinely with Māori organisations, respecting their expertise and mana. These include Awarua Whānau Services, He Iwi Kotahi Tatou (Moerewa), Māoriland (Ōtaki), Te Roopu Awhina (Porirua), Muaūpoko Tribal Authority.

Further to this the co-governance model for the project (Kirstin Te Wao is the inaugural chair) reflects the Foundation’s commitment to te Tiriti o Waitangi

Whakapapa



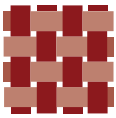
We recognise that in the past, collection and analysis of administrative data has not adhered to principles of free, prior, and informed consent, particularly IDI data.

How this has influenced our approach

Our interpretation and analysis acknowledges that the inequities faced by Māori are the outcome of systemic issues stemming from colonisation. We have actively pushed against interpreting social issues as “costs” to the crown and taxpayer.

Principles of Safe Use

Whanaungatanga



We recognise the mana motuhake of iwi and Māori communities. We take our roles as Tāngata Whenua and Tāngata Tiriti seriously.

How this has influenced our approach

We have engaged genuinely with Māori organisations, respecting their expertise and mana. These include Awarua Whānau Services, He Iwi Kotahi Tatou (Moerewa), Māoriland (Ōtaki), Te Roopu Awhina (Porirua), Muaūpoko Tribal Authority.

Further to this the co-governance model for the project (Kirstin Te Wao is the inaugural chair) reflects the Foundation's commitment to te Tiriti o Waitangi

Manaakitanga



Upholding and uplifting the mana of rangatahi and their whānau.

How this has influenced our approach

We have taken a holistic, rangatahi-centred view of data, informed by wellbeing frameworks including Te Kupenga and OECD. We have deliberately avoided a deficit- or cost-based approach.

Kotahitanga



Solidarity with rangatahi and those that work closely with them. Contributing to data capability-building for Māori working with rangatahi.

How this has influenced our approach

We've incorporated measures of wellbeing and Māori wellbeing in the tool. The tool itself makes relevant data more accessible.

Kaitiakitanga



Taking a long-term, intergenerational view in this work, with a clear role for Māori as kaitiaki.

How this has influenced our approach

The proposed governance of Thriving Rangatahi explicitly sets out a role for Māori in governance and administration of the tool. The data explorer tool will only be made available to individuals and organisations who are committed to the wellbeing of rangatahi and work in a manner consistent with these principles